

# *Bulletin of*

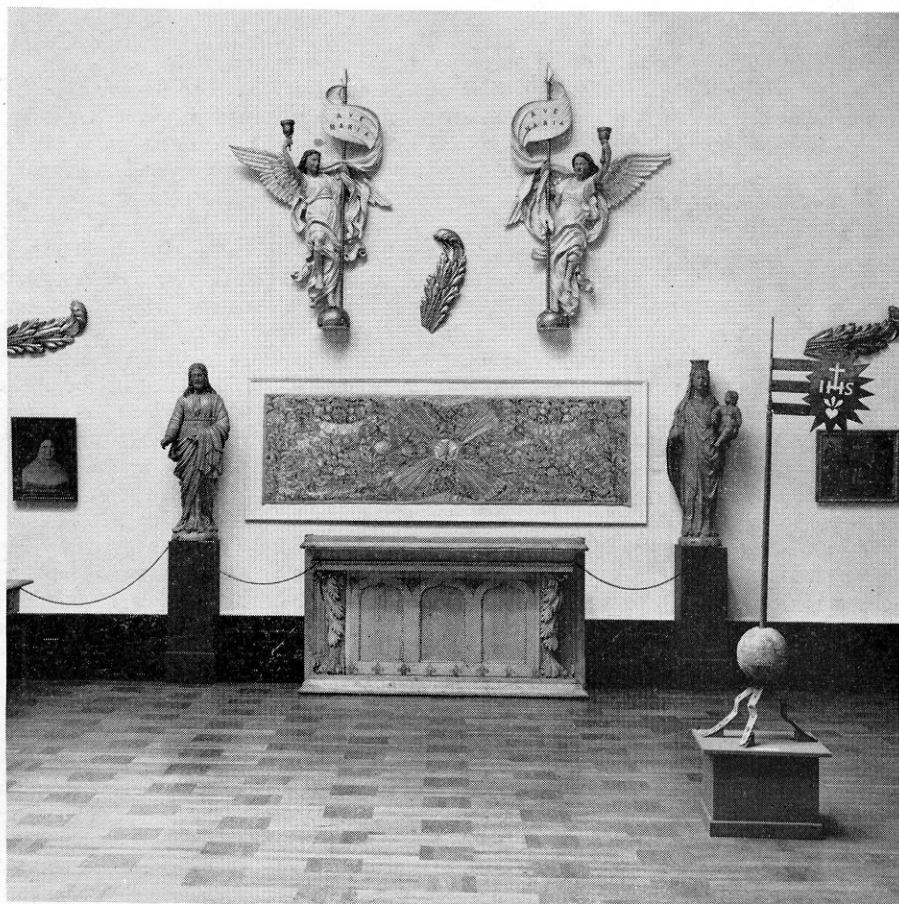
# THE DETROIT INSTITUTE OF ARTS

*of the City of Detroit*

VOLUME XXVI

• NUMBER 2

• 1947



LOAN EXHIBITION: THE ARTS OF FRENCH CANADA, 1613-1870  
*Detroit Institute of Arts—September 24 to October 25, 1946*

*Annual Report Number*

THE ARTS COMMISSION ANNUAL REPORT  
FOR THE YEAR 1946

TO THE HONORABLE  
THE COMMON COUNCIL OF THE CITY OF DETROIT

GENTLEMEN:

We take pleasure in transmitting the report of the Arts Commission for the year ending December 31, 1946. The subjects of the report are classified under the following headings:

- A. Growth of the collections (gifts, purchases, bequests)
- B. Exhibitions
- C. Educational Activities
- D. Details relating to the staff and building:
  - (a) Attendance
  - (b) Building
  - (c) Library
  - (d) Museum conferences
  - (e) Publications
  - (f) Staff changes
  - (g) Care of the collection

A. GROWTH OF THE COLLECTIONS

The growth of the collections during the past year has been notable both in quality and quantity. This growth has been both by purchase and by gift.

The City Appropriation for purchase for the past two years has been concentrated chiefly upon building up the long neglected classical collections. An Etruscan bronze horseman, fifth century B.C., of extraordinary artistic interest was purchased for the Roman gallery.

The gifts from individuals and from the Founders Society's funds this year will be found in the attached list of accessions. It is a list which forms a remarkable record of generosity and civic spirit on the part of the men and women interested in the museum, who are determined to do something distinguished for the City of Detroit. To their public spirit and generosity the museum and the people of this city are deeply indebted. To suggest the variety and importance of these gifts, we may point to the gifts by the Membership Funds of the Founders Society: an XVIII Dynasty Egyptian *Sculptured Head*; an important fifteenth century Sieneese painting *The Betrayal of Christ* by Sassetta; and the *Wilkinson Family* by the eighteenth century English painter Benjamin Wilson. We also call your attention to the splendid gifts made to the eighteenth century French room by Mr. and Mrs. Ernest Kanzler; the *Holy Family with St. Anne* by Jacob Jordaens, given by Mrs. Ralph Harman Booth in memory of her husband; the group of rare and beautiful examples of early American furniture, given by Mrs. Edsel B. Ford; a remarkable masterpiece of XV Century Flemish painting *St. Jerome in the Desert* by Rogier van der Weyden, given by Mr. and Mrs. Edgar B. Whitcomb; the masterpiece of early French painting *St. Robert of Molesmes*, given by Mrs. Lillian Henkel Haass; two paintings of first importance in the history of American art, given by Mr. Dexter M. Ferry, Jr.: *Watson and the Shark* by John Singleton Copley, and the *Nocturne in Black and Gold, The Falling Rocket* by James Abbott McNeill Whistler; the numerous gifts to our collections of paintings and of decorative arts made by Mr. Robert H. Tannahill; the chasuble of Venetian velvet with embroidered orphreys of Bohemian workmanship, about 1400-20, given to the textile collection by Mr. and Mrs. Leslie H. Green; and the large group of old and modern prints donated by Dr. and Mrs. George Kamperman to the print collection. These gifts and many others make it a memorable year in the growth of the museum. It is with a feeling of deep gratitude toward the generous and loyal friends of the museum who have made these many contributions that we add the full list under the section on Accessions.

## B. EXHIBITIONS

The exhibitions for the year covered a wide segment of the Art World and presented works of interest to practically every museum goer. The exhibitions marked (\*) were originated and arranged by the museum staff; the other exhibitions were traveling exhibits or were assembled by the participants:

- January 3-31 \**Work in Progress Exhibit*: Paintings by Charles Burchfield and John Carroll.
- January 22-March 3 \**Origins of Modern Sculpture*. Catalogue of 12 pages, by W. R. Valentiner.
- February 5-March 3 \**Work in Progress Exhibit*: Artists from Provincetown: Oliver Chaffee, Karl Knaths, Grace Pfeiffer, Heinrich Pfeiffer, Hope Voorhies Pfeiffer, Mab Pfeiffer and Agnes Weinrich.
- March 5-24 \**Work in Progress Exhibit*: Paintings by Ben Shahn, Karl Zerbe, Julian Levi.
- March 19-April 28 \**Detroit Museum of Art, 1883-1946: Sixty Years in Review*.
- April 2-May 6 \**Work in Progress Exhibit*: Paintings by Lyonel Feininger and Harry Bertolia and sculpture by Mary Callery.
- April 28-May 28 \**Michigan Artist-Craftsmen* (arranged by the Detroit Artists Market)
- April 30-May 19 \**Exhibition of work from the Detroit Public Schools*.
- May 7-June 2 \**Work in Progress Exhibit*: Paintings by Joe Jones, Georges Schreiber, Carl Gaertner.
- May 21-June 2 \**Exhibition of work from Wayne University*.
- June 4-30 \**Encyclopaedia Britannica Collection of Contemporary American Paintings*. Catalogue of 116 Illustrations, 41 in color.
- July 5-August 1 \**Work in Progress Exhibit*: Scalandre Silks.
- July and August \**Contemporary Prints and Drawings*.
- August 4-25 *Annual Photographic Salon*.
- August 16-Sept. 20 \**Children's Exhibit*: Educational Department Summer Program.
- September 3-29 \**Work in Progress Exhibit*: Paintings by Walter Stuempfig; Ceramics by Gertrud and Otto Natzler.
- Sept. 3-Oct. 31 *One Hundred Photographs of Artists in America* by Helen Balfour Morrison.
- Sept. 24-Oct. 25 \**The Arts of French Canada*. Catalogue of 52 pages, with 20 pages of illustrations, by E. P. Richardson.
- Oct. 1-Nov. 2 \**Work in Progress Exhibit*: Paintings by Franklin C. Watkins and Louis Bouche.
- Oct. 22-Nov. 3 *School Exhibition from Talented Classes*.
- Nov. 12-Dec. 15 \**Michigan Artists Exhibition*. Catalogue of 14 pages, 3 illustrations.
- Nov. 12-Dec. 22 *Fifty Original Covers for the New Yorker*.
- November 5-Dec. 1 *Alger House Photographic Competition*.

### *At Alger House:*

- March 5-31 *Paintings by Mark Toby*. Catalogue.
- April 4-May 5 *Painting, Sculpture and Lithographs* by Kathe Kollwitz.
- May 11-26 *Exhibition of Work of Grosse Pointe Schools*.
- June 6-25 *Grosse Pointe Artists Association Exhibition*.
- June 20-July 29 *Exhibition of Story Book Quilts* by Marian Cheever Whiteside.
- July 23- August 15 *Henry E. Candler Prints*.
- August 1-Sept. 10 *Exhibition of work of Detroit Painters, Sculptors and Potters*.
- Sept. 24-Oct. 25 *Canadian Scenes*.

Nov. 26-Dec. 22 *Exhibition of Objects of Art Under One Hundred Dollars.*

*Flower Displays arranged by the Department of Parks and Recreation:*

April 19-29 *Easter Lilies.*

November 9-17 *Chrysanthemum Show.*

December 15-31 *Christmas Flowers.*

### C. EDUCATIONAL ACTIVITIES

A greater variety of educational activities for adults and children was offered in 1946 than ever before.

#### (a) *Activities for adults*

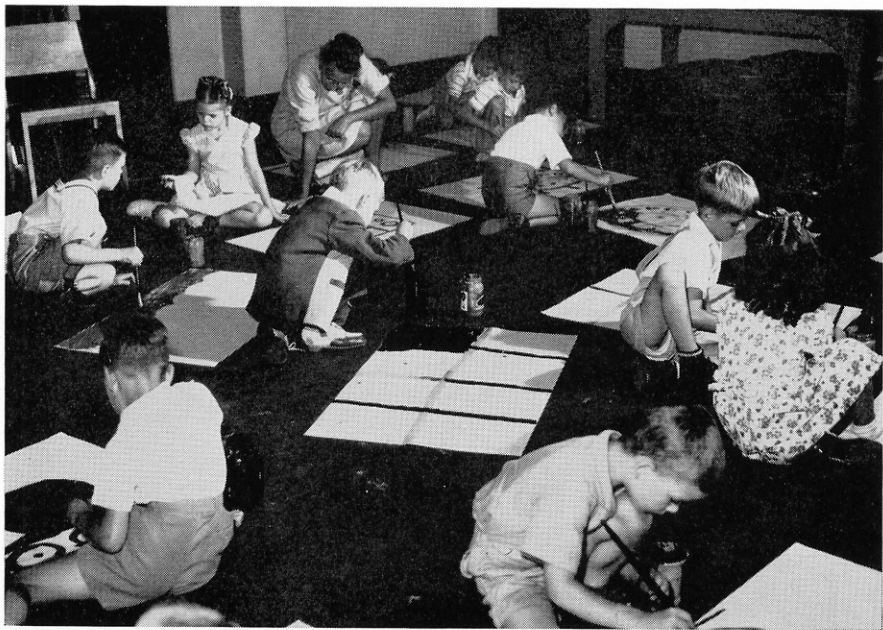
In addition to regular gallery talks and lecture courses the educational department began classes in drawing, painting, and sculpture for amateur adults. These classes are designed to further the enjoyment and appreciation of art through actual experience in various mediums. The emphasis is on a better acquaintance with the museum collections rather than a development of individual talents or technical ability. In order to meet the large response following the announcement of these classes last fall the museum secured the assistance of two outside instructors: Herbert Silverman and Robert Dieboll.

During the fall Adele Coulin Weibel gave an afternoon course, *Two Thousand Years of Handwoven Textiles*. Wednesday evening lectures were devoted to *A Brief History of Art*; and cooperating with the Fine Arts Department of the Detroit Public Library, Elizabeth H. Payne gave a series of lectures on *Twentieth Century Painting* at the Main Library.

One of the outstanding events of the fall was the symposium of lectures in October on the exhibition, *The Arts of French Canada*, presenting six lectures by scholars in the field and its relation to Detroit history.



MUSEUM CLASSES FOR CHILDREN. Slides are shown to explain and illustrate the day's activity in the classes conducted by the Museum educational staff for children during out of school hours.



MUSEUM CLASSES FOR CHILDREN. Having seen slides of Peruvian textiles and other examples from the Museum collection which show repeated patterns, first and second grade children use the same design principle in their own painting.

Four stimulating evenings were spent by members of the staff, Detroit artists and teachers in discussion of *Little Shows of Work in Progress*. These "discussion evenings" will be continued in the coming year.

(b) *Films*

The film program which included such films as *The Fighting Lady*; *Alexander Nevsky*, a Russian film; and *Himlaspelet*, a Swedish film; continued to be popular during the past year.

(c) *Lectures and Demonstrations*

With the policy of offering as varied adult activities as possible, including historical, archaeological, aesthetic and technical approaches on an elementary as well as scholarly level, we have been fortunate in having the cooperation of the following people in lectures and demonstrations:

January 17 *G. I. Florence*, by Buford L. Pickens

January 22 *The Origins of Modern Sculpture*, by Dr. W. R. Valentiner

February 6 *A Demonstration of Sculpture* (in connection with the special exhibition, *Origins of Modern Sculpture*), by G. Alden Smith

February 20 *A Demonstration of Sculpture* (in connection with the special exhibition), by Gwen Lux

March 12 *Art Classes in the Detroit Public Schools*, by Helen Copley

April 24 *Opportunities for Modern Architecture in Detroit*, by Hawkins Ferry

October 11 & 12 Symposium on exhibition, *The Arts of French Canada:*

*Habitation and Life in Quebec*, by Marius Barbeau

*Canadian Sculpture*, by Robert H. Hubbard

*The Detroit Area During the French Period*, by Randolph Adams

*French Canadian Silver*, by Louis Carrier

Demonstrations for the Detroit Public School Classes:

- October 23 *Oil Painting*, by Guy Palazzola  
October 30 *Watercolor*, by David Mitchell  
November 6 *Chalk*, by John Coppin  
November 13 *Watercolor*, by Louise Jansson  
November 20 *Clay*, by Albert Armstrong  
December 4 *Clay*, by Marietta Hipple  
December 11 *Oil Painting*, by Kenneth Gore

(d) *Children's Activities in cooperation with the schools*

The program with the art department of the Detroit Public Schools, interrupted by the restrictions on chartered bus service during the war, was resumed on a limited scale in the spring, and on a full scale in the fall. This program provides an opportunity for art classes in each school to visit the museum, thereby introducing the collections to thousands of children every year. In order to increase the effectiveness of the visits this year each teacher has been provided with written information on the subject of each program as preparation for the visit.

The fine cooperation of Miss Helen Copley, Supervisor of Art, and other members of the Board of Education with the museum make this program the envy of many schools and museums throughout the country.

Other school classes in the metropolitan area as well as Scout groups, Campfire Girls, Church and Community groups have visited the museum by special appointment.

(e) *Children's Activities—out of school programs*

The out of school classes for children were expanded last year so that a greater number of children and a wider age range could have the opportunity of becoming



MUSEUM CLASSES FOR CHILDREN. After painting repeated patterns, first and second grades go to the galleries to see and discuss works of art related to their activity.

acquainted with the museum collections. During the summer seven classes a week for a term of six weeks were offered for kindergarten through ninth grade students. At the same hours classes for the younger children were held, gallery talks were given for parents. This winter two terms of five weeks have been offered for each age group.

In all children's classes an understanding of art, and particularly our own collection, has been approached through discussion and creative activities. In this program the department has had the able assistance of Mrs. David Middleton, former instructor in art at the Los Angeles Progressive School, and students in Art Education at Wayne University. During the fall students in Art Education at Wayne University also acted as monitors for the Detroit Public School Program. With an expanding educational program student assistance is valuable, and the museum is grateful to Dr. Jane Welling, Head of the Department of Art Education, for her cooperation.

(f) *Staff and Equipment*

The department has also expanded in staff and space. A new workroom has been added, and Mrs. Marjorie Young Hegarty became a full time member of the staff September 1.

(g) *Statistics*

	<i>Number</i>	<i>Attendance</i>
Public lectures and gallery talks.....	135	6867
Films .....	10	7600
Special talks for adult groups.....	88	2863
Children's Activities:		
Cooperative program with Detroit Public Schools.....	27	6302
Special appointments (including school, church groups, Scouts, etc.).....	142	4933
Special program (Junior League Radio Party).....	1	1250
Out of school Children's Program.....	87	3915
	491	33,730

## D. DETAILS RELATING TO THE STAFF AND BUILDING

(a) *Attendance*

In the past year the attendance at the main museum was 535,421. The attendance ran ahead of last year for the first nine months; in the fall a slackening made itself felt and the last three months were behind last year's figures. The attendance at the Alger branch museum was 24,466, a gratifying increase of nearly 14,000 over 1945.

(b) *Building*

A number of important changes in the building interior and exterior were made. In the Roman gallery (No. 17) the wall covering and part of the wood-backing were removed. Metal lath and new plaster walls were installed and the gallery was repainted. The Roman collections were reinstalled in new cases and pedestals. The Donatello sculpture was installed in the wall of Gallery 11, being set in plaster with a stone frame. One new gallery representing The Wilderness and The Frontier in American art was opened during the year. Several new cases and installations were made in the Egyptian Gallery, and in the room housing the textile collection. A new case of Pewabic pottery was set up in the American galleries. The print galleries have been entirely repainted and redecorated in a fresh up-to-date fashion, while at the same time the cases demonstrating the tech-

niques of print-making have been remounted so that they may be exhibited permanently in a more convenient and presentable manner than heretofore. New fluorescent lighting was installed in the basement classroom and basement area used for carving and modeling classes, in the general offices, and in the four educational department offices. A new darkroom was installed in the photographic studio, and the old catalogue room in the basement was turned into a new office for Dr. Lechler. The old basement dining room was converted into a new classroom for Wayne University and public school art classes. A painting and carpentry shop was set up in the basement. Additional book stacks were installed in the library stack space.

New plantings were made in the Rivera and the outdoor courts by the Department of Parks and Recreation. A new stone bench and a flagstone walk added to the charm of the outdoor court.

All of the marble steps at the main entrance were removed and rebuilt; a flagstone walk was added. New copper roofing was installed on the marquee over the shipping room dock. Work on the floodlighting on the front of the building was commenced; installation of under-ground conduit and foundations for floodlighting poles being completed awaiting the delivery of the poles themselves.

At Alger House work was started on the fluorescent lighting for the five second floor galleries. The Alger House exterior woodwork, windows and shutters were painted and a new oil burner and furnace cover were installed.

#### (c) *Library*

During the year the Library added 262 books, 1,812 pamphlets, 495 photographs, and 428 lantern slides. With the reopening of mail channels to Europe, the Library sent to all the European cooperating institutions on its exchange list the catalogues of the exhibitions held at the Detroit Institute of Arts during the war years. The number of these catalogues sent out by the Library was 709. Letters went with the catalogues urging the resumption of our exchange policy. In response we have received many publications and grateful letters from the European museums and libraries.

#### (d) *Museum Conferences*

At the Annual Meeting of the American Association of Museums in Washington, D. C., May 17 and 18, Messrs. Richardson, Burroughs, Newberry, Robinson, Woolfenden and Shaw were in attendance, also Misses Insley and Payne. Messrs. Richardson, Burroughs and Newberry also attended the meeting of the Association of Art Museum Directors. Mr. Richardson and Mr. Burroughs represented the museum at the Mid-West Museums Association in Chicago in October, 1946.

#### (e) *Publications by the Staff*

##### BOOKS, GUIDES AND CATALOGS:

Burroughs, C. H., A brief history of the Detroit Institute of Arts and its parent organization, the Detroit Museum of Art. 1945

Lee, S. E., A picture book: Art of India, China and Japan. 1946

Richardson, E. P., A picture book: Small in size, great in art. 1946

Richardson, E. P., The arts of French Canada. 1946

Valentiner, W. R., Origins of modern sculpture. 1946

##### PERIODICAL ARTICLES:

Burroughs, C. H., [Letter]: Likes illustrators' department. Art Digest. v.20, p.4, Apr. 1, 1946

Newberry, J. S., Ancient origins of modern sculpture. Art Digest. v.20, p.7, Feb. 1, 1946

Newberry, J. S., Relighting the age of Voltaire. Art News. v.44, p.28, Jan., 1946



- Richardson, E. P., *New horizons*. Magazine of Art. v.39, no.7, pp.281-291, Nov., 1946
- Richardson, E. P., *The arts of French Canada*. Canadian Art. v.4, no.1, pp.16-18, Nov., 1946
- Robinson, F. W., *Seleucus IV as Heracles, a Hellenistic bronze in Kansas City*. Art Quarterly. v.9, no.2, pp.178, 181, Spring, 1946
- Weibel, A. C., *A late medieval chasuble cross*. Art Quarterly. v.9, no.2, pp.144-152, Spring, 1946

BULLETIN ARTICLES:

- Burroughs, C. H., *General Amasa Davis by Gilbert Stuart*. v.25, no.3, p.52, 1946
- Lee, S. E., *Pair of bronze ornaments in the form of tiger and antelope*. v.25, no.3, p.61, 1946
- Lee, S. E., *Porcelain bowl with underglaze blue and white decoration, Chinese, Ming dynasty*. v.25, no.3, p.65, 1946
- Newberry, J. S., *Newly reopened 18th century French room*. v.25, no.1, p.5, 1946
- Richardson, E. P., *Adoration of the magi by Joos van Cleve*. v.25, no.1, p.13, 1946
- Richardson, E. P., *Hygeia, the goddess of health by P. P. Rubens*. v.25, no.1, p.9, 1946
- Richardson, E. P., *Mystic marriage of St. Catherine by Veronese*. v.25, no.1, p.1, 1946
- Richardson, E. P., *River god by Sansovino*. v.25, no.1, p.7, 1946
- Richardson, E. P., *St. Peter by Michele Giambono*. v.25, no.3, p.58, 1946
- Richardson, E. P., *Self-portrait by Rembrandt Peale*. v.25, no.3, p.53, 1946
- Richardson, E. P., *The Virgin and Child by Andrea della Robbia*. v.25, no.3, p.50, 1946
- Weibel, A. C., *William Penn's treaty with the Indians*. v.25, no.3, p.57, 1946
- Weibel, A. C., *A Persian astrolabe*. v.25, no.3, p.59, 1946
- Weibel, A. C., *The pagan paradise*. v.25, no.3, p.66, 1946
- Weibel, A. C., *Cisele velvet, Italian, Genoa*. v.25, no.3, p.67, 1946

(f) *Staff changes*

Clyde H. Burroughs, the Secretary, retired on December 1, after forty-five years of service at the museum. He was succeeded by William A. Bostick. Miss Agnes Savage, Librarian, retired on December 4, after twenty-two years of service. John D. Skilton, Jr., was appointed assistant to the director on October 29. Miss Eleanor Ferry again joined the staff as bookkeeper after serving three and one-half years in the Women's Army Corps.

Paul L. Grigaut was appointed Assistant Art Curator June 5, and resigned on September 20 to return to the State Department in Washington. Sherman E. Lee, Assistant Curator Oriental Art, took a leave of absence to go to Japan as Technical Advisor on Collections, Division Arts and Monuments, on August 26. Mrs. Marjorie Young Hegarty was appointed Junior Art Curator September 3, 1946, in the Educational Department.

W. R. VALENTINER

When Dr. Valentiner retired in 1945 he retained his connection with the Museum as an adviser; during the past year he gave up this connection, thus bringing to a close a service of twenty-five years during which his gifts as scholar and director transformed the Detroit Institute of Arts. Great as were his gifts as a scholar and writer, remarkable as was his flair for arranging exhibitions and for skillful buying, his greatest achievement of all was to give to this institution a great idea, an idea which gave it a unique program and style.

Museums had grown up in this country more or less like Topsy; they just

grew—out of the collecting instinct and the love for art. Dr. Valentiner gave the art museum a new philosophy. This was nothing less than to make the museum a microcosm of the arts, representing within one building the whole meaning of the arts in human life, in orderly historical sequence of development from pre-historic man to the life of our own day. This ideal of universal knowledge (for the arts are a mirror of civilization) has a heroic quality in its world perspective and scale. Those of us who have taken part in trying to carry it out can testify that it is an intensely interesting and satisfying museum program to work on. But he not only gave the museum a program of universal knowledge but carried this out in a distinctive style, making each gallery represent a period of culture by carefully selected examples of every aspect of that period's art. The result is a museum which shows the arts as part of life. The ordinary museum in its method of installation still belongs to the period of art for art's sake; the work of art is treated as an isolated thing without connections in time or space. This museum is a history of the human race as it is illustrated by man's imaginative life in the arts, by his technical skills and his driving ideas.

Dr. Valentiner brought to his work for us not only this large view of humanity and history, but great professional gifts. His series of Old Master exhibitions, his taste in arrangement, his breadth of knowledge, are familiar to all who know the museum during the past twenty-five years. But perhaps only those of us who worked closely with him were aware that behind the reserve of a student and hard-working professional man is a generous minded, witty, sensitive and magnanimous human being. He left a monumental achievement behind him in Detroit. If he has found that a well-earned retirement was not after all to his temperament, that is the good fortune of Los Angeles.

E. P. RICHARDSON



MUSEUM CLASSES FOR CHILDREN. Construction projects and scrapbooks appeal to fifth and sixth grade students in studying Egyptian art.

The retirement of Clyde H. Burroughs is an event in the life of the Museum which cannot be passed over with a brief formal notice.

He gave forty-five years of service to the Museum and at the end of that time left regretted by all who worked with him. This is an indication of the personal qualities which earned him the affection and regard of all who came in contact with him.

Mr. Burroughs entered the service of the Detroit Museum of Art in 1901. Not only was the Detroit Museum very much smaller than it is at present, but the art museum as a distinctive American institution was then in its infancy. During the intervening years the American art museum developed from an old-fashioned repository for all kinds of relics of the past into a new kind of educational institution. The change came so quickly that the average person today hardly realizes how completely the whole concept of the museum has been transformed in twentieth century life. The rise of a new profession of art historians and museum educators, the transformation of methods of display, the growth of scores of new techniques of interpreting museum collections to all levels of public interest from that of the small child to the mature adult and the scholar, the development of a new form of internal organization, are some of the changes that have taken place. In addition to that, in Detroit the museum was transformed from a private corporation to a municipal institution with the support of a private sustaining society. In all these changes as they affected our Museum, Mr. Burroughs played an active and honorable part. His election as president of the Association of Art Museum Directors in 1939 was a recognition from his colleagues of the position he had earned in his profession.

He also served the Detroit Institute of Arts as curator of American art. His chief interest as a curator was in building up a representative series of pictures to illustrate the history of American painting. He was fortunate to have the collaboration of a generous and understanding donor, Mr. Dexter M. Ferry, Jr., and the result of their collaboration is shown particularly in the fine representative series of early Colonial portrait painters and of the painters of the early twentieth century, notably the series of *The Eight*. His work and his character were part of this Museum for forty-five years. His retirement is well earned, but he is missed.

E. P. RICHARDSON

#### AGNES SAVAGE

The Staff Librarian at the Detroit Institute of Arts, Miss Agnes Savage, is retiring after twenty years of building and maintaining one of the most complete and efficient staff libraries in the American museum field. This library is a selection of books representing the background of the Institute's great array of arts in every form and medium—architecture, sculpture, painting, etching, drawings, textiles and all other crafts.

A library designed for the research and creative use of specialists should properly become a smoothly functioning precision tool, endowed with permanence, authenticity, scope and flexibility, giving a craftsman's pleasure to the expert handler as he works.

The field of the arts might seem a sharply defined type of specialization. But the record of man's preoccupation with that phase of his activity goes back to the childhood of mankind. In the period from then to now its records have been strewn, now thickly, now thinly, over the whole earth. And always, for those who look closely, art projects itself vividly against an apparently limitless future.

Probably there is no book or other document ever made and preserved which can be lightly rejected as of no pertinence in the field of the plastic arts. Such an embarrassment of possibilities can be resolved on the basis of quality, only. Items

sought for such a collection as Miss Savage was detailed to assemble will possess art values in and of themselves. The collector must apprehend those values. Each item must possess relative permanence, breadth and availability, first. Then all must be so disposed within a systematic organization of order and unity that the specialist does not waste time and effort in his undertakings. Such a library is a work of art in itself.

Miss Savage is the first to acknowledge her debt to the notably gifted and accomplished staff under which she was privileged to work; and the staff, in turn, gratefully acknowledges its debt to her keen sense of the purposes of the library, her persistence in the pursuit of the needed item, her quick grasp of the documentary values, and her high standards of library order and availability. It is a reliable and important instrument for research and creative work which Miss Savage leaves to Detroit at the Institute, one which will bring a continuing satisfaction to those librarians who follow her, and to the members of the museum staff who will make use of the collection during the years to come. We congratulate both the staff and Miss Savage. Each will miss the other.

MILDRED E. SIMPSON

(g) *Care of the collection*

Works of art repaired in 1946:

Matteo di Giovanni, *Virgin and Child with Saints*—blisters laid down.

Giambono, *St. Peter*—blisters laid down.

Hoppner, *Lady Charlotte Campbell*—cleaned and new varnish applied.

Teniers, *Inn Kitchen*—varnish blemishes removed.

Charles Willson Peale, *Self Portrait*—old discolorations in varnish removed.



MUSEUM CLASSES FOR CHILDREN. Seventh and eighth grade students learn print techniques and become acquainted with prints in the collection as they cut linoleum blocks.

Allston, *Shepherd Boy*—surface polished.  
 Chase, *Self Portrait*—varnish discolorations removed.  
 Ruisdael, *Cemetery*—surface repolished.  
 Hondecoeter, *Barnyard*—varnish blemishes removed.  
 Cornelis van Cleve, *Virgin and Child*—bloom removed and surface repolished.  
 Cranach, *Virgin and Child with Angels*—old varnish spots removed and surface repolished.  
 Gerard David, *The Annunciation*—frame re-toned.  
 Van Goyen, *Windy Day*—bloom removed from the varnish and surface repolished.  
 Correggio, *The Mystic Marriage of St. Catherine*—transferred to a new panel, surface damages repaired, entire painting cleaned and revarnished.  
 Antoine LeNain, *Village Piper*—paint flakes at edge of panel repaired.  
 Master of the St. Lucy Legend, *Virgin in the Rose Garden*—paint flaking along an old crack secured.  
 Sassetta, *Betrayal of Christ*—heavy coating of old varnish and overpaint removed, new varnish applied; new frame built.  
 Enguerrand Charonton, *St. Robert of Molesmes*—transferred to new panel.  
 Carracci, *Holy Family with St. Francis*—cleaned, revarnished, copper panel re-mounted in a special wooden backing.  
 Small damages to three paintings in loan exhibitions were taken care of.  
 Six paintings stored throughout the war for the Rijksmuseum, Amsterdam, inspected and some varnish bloom removed from one.  
 One painting stored throughout the war for the Royal Museum of Antwerp inspected and report made to the Antwerp Museum on signs of deterioration in the panel.

Respectfully,

ARTS COMMISSION

EDGAR B. WHITCOMB

*President*

MRS. EDESEL B. FORD

WILLIAM A. BOSTICK

K. T. KELLER

*Secretary*

ROBERT H. TANNAHILL

E. P. RICHARDSON

*Commissioners*

*Director*

## ANNUAL REPORT OF THE FOUNDERS SOCIETY

TO THE MEMBERS OF THE DETROIT MUSEUM OF ART FOUNDERS SOCIETY

LADIES AND GENTLEMEN:

The year 1946 was significant since it marked an all-time high in the wealth of contributions from the Detroit Museum of Art Founders Society to the Detroit Institute of Arts. The attainment has not only been a rich one, monetarily speaking, but also rich insofar as the artistic worth of the acquisitions is concerned.

The generosity of the Founders Society has brought to the Museum total gifts of \$241,683.26, which includes \$200,599.00 in works of art. This is more than a \$50,000 increase over the \$148,575.66 in works of art reported for 1945.

Accompanying this report is an imposing list of the many accessions which add new breadth to every Museum department. Many of the acquisitions came as the personal gifts of individual members while the Trustees purchased others from the funds of the society. Particularly outstanding was the enrichment of the

Flemish Gallery through the addition of *St. Jerome in the Desert*, by Rogier van der Weyden, and *St. Robert of Molesmes*, attributed to Enguerrand Charonton, gifts of Mr. and Mrs. Edgar B. Whitcomb and Mrs. Lillian Henkel Haass respectively.

Total Cash Income for the Founders Society 1946 was \$197,704.09, a considerable increase over the previous year. Presented below is a resume of the Treasurer's Reports for the last three years:

	1944	1945	1946
Income from invested funds.....	\$ 19,957.37	\$ 20,129.30	\$ 20,715.71
Membership dues and contributions....	115,965.57	108,480.96	176,988.38
Total Cash Income.....	135,922.94	128,610.16	197,704.09

A total of \$162,832.26 was disbursed during the year, mostly for the purchase of works of art.

By virtue of their gifts Mrs. Allan Shelden has been enrolled as a Fellow; Mrs. Louis Mendelssohn, W. Hawkins Ferry, Warren S. Booth, Erick W. Bergman, Miss Grace Tower, Mr. and Mrs. Leslie H. Green, Henry T. Ewald, and Robert R. Williams have been enrolled as Governing Life Members.

The membership department maintained 1618 members, approximately the same number of annual and sustaining members as last year. The total received from these nominal memberships in 1946 was \$19,794.50, compared with \$19,350.50 in 1945.

At the Annual Meeting of the Corporation held on January 18, 1946, Robert H. Tannahill and E. Raymond Field were re-elected to succeed themselves as Trustees for the term ending 1949, and Mrs. Ralph H. Booth was re-appointed as a Trustee by Mayor Jeffries for the same period.

At the Trustees Meeting following the Annual Meeting on January 18, 1946, officers were elected as follows: D. M. Ferry, Jr., President; Mrs. Lillian Henkel Haass, Vice President; Dr. George Kamperman, Treasurer; Clyde H. Burroughs, Secretary.

The Finance Committee consisting of Edgar B. Whitcomb, Chairman; D. M. Ferry, Jr., and Dr. George Kamperman was re-elected at this meeting.

Mr. Clyde H. Burroughs retired on December 1, 1946, after 45 years of outstanding service to the museum. At the Trustees' Meeting of October 31, the Director offered a resolution that Mr. Burroughs' resignation be accepted with sincere regret and that the thanks and appreciation of the Trustees be conveyed to him for the service which he rendered during his long term of office.

Also at the meeting of October 31, it was decided that the Trustees at their discretion could elect Associate Trustees from among the Governing Life Members of the Corporation, said Associate Trustees to have all the privileges of Trustees except the right to vote.

Marking the sixty-first year of achievement for the Detroit Museum of Art Founders Society, 1946 brought attainments which will be hard to equal in future years. However, each year marks new growth in the influence and worth of the museum, and deep thanks and appreciation are due our many members and friends whose generosity helped to make this past year such an outstanding one.

Respectfully yours,  
BOARD OF TRUSTEES

DEXTER M. FERRY, JR.  
*President*

WILLIAM A. BOSTICK  
*Secretary*

## ACCESSIONS

JANUARY 1, 1946 to DECEMBER 31, 1946

### PAINTINGS

- From the Top of Kaaterskill Falls*, by Thomas Cole, American, 1801-1848. Gift of D. M. Ferry, Jr.
- House With Black Trim*, by Charles Culver, American, 1908. Gift of Robert H. Tannahill.
- Naval Engagement Between American and British Men-of-War*, by L. A. Briggs, American, about 1850. Gift of Mrs. Edsel B. Ford.
- Girl With Mirror*, by Anne Goldthwaite, American, 1875-1944. Gift of Anne Goldthwaite Estate.
- Sunset*, by Martin Johnson Heade, American, 1814-1904. Gift of D. M. Ferry, Jr.
- Moonlight*, by Robert Dick, American, contemporary. Gift of Charles Culver.
- West Street from the Campus of Hillsdale College, 1893*, by George B. Gardner, American, 1835-1904. Gift of Mrs. H. C. Miller.
- A Bit of Cape Cod*, (water color), by Henry Ward Ranger, American, 1858-1916. Gift of Dr. and Mrs. George Kamperman.
- The Ornithologist*, by Constance C. Richardson, American, contemporary. Gift of the Audubon Society of Detroit.
- Portrait of General Elias Dayton*, by James Sharples, American, c.1751-1811. Gift of D. M. Ferry, Jr.
- Old St. Patrick's*, by John Kane, American, 1860-1934. Gift of Robert H. Tannahill.
- Nature Lover*, (water color), by John A. Wedda, American, contemporary. Gift of Mrs. Lillian Henkel Haass.
- Belle Isle*, (water color), by Paul P. Peters, American, contemporary. Gift of John S. Newberry, Jr.
- Dark and Bright*, by Wallace Mitchell, American, contemporary. Gift of Robert H. Tannahill.
- Pigeon Cove by Moonlight*, by C. Edmund Delbos, American, contemporary. Gift of Louis James Rosenberg.
- American Exchange*, by William Michael Harnett, American, 1848-1892. Gift of Robert H. Tannahill.
- The Falling Rocket, Nocturne in Black and Gold*, by James Abbott McNeill Whistler, American, 1834-1903. Gift of D. M. Ferry, Jr.
- Watson and the Shark*, by John S. Copley, American, 1737-1815. Gift of D. M. Ferry, Jr.
- Shakespearean Figure*, by William Page, American, 1811-1885. Founders Society, Merrill Fund.
- Landscape*, by Alexander Harrison, American, 1853-1930. Gift of Mrs. Helen Church Marsh.
- Studio of the Artist, Thomas Sully* (water color), by James G. Peale, Jr., American, 1823-1891. Gift of Robert H. Tannahill.
- Near Cecina, Tuscany*, (water color), by Sir Muirhead Bone, English, 1876-. Gift of Dr. and Mrs. George Kamperman.
- Porto Maurozio*, (water color), by Sir Muirhead Bone, English, 1876-. Gift of Dr. and Mrs. George Kamperman.
- Therapia on the Bosphorus*, (water color), by Sir Muirhead Bone, English, 1876-. Gift of Dr. and Mrs. George Kamperman.
- The Wreck*, by George Morland, English, 1763-1804. Gift of Mr. and Mrs. E. Raymond Field.
- Portrait of William Bishop When Young*, miniature, English, c.1790. Gift of Mrs. Edsel B. Ford.

- Portrait of William Bishop When Old*, miniature, English, c.1820. Gift of Mrs. Edsel B. Ford.
- The Wilkinson Family*, by Benjamin Wilson, English, 1721-1788. Founders Society, General Membership Funds.
- Holy Family with St. Anne*, by Jacob Jordaens, Flemish, 1593-1678. Gift of Mrs. Ralph Harman Booth.
- St. Jerome in the Desert*, by Rogier van der Weyden, Flemish, c.1399-1464. Gift of Mr. and Mrs. Edgar B. Whitcomb.
- St. Robertus of Molesmes*, French (Provence), ca. 1440. Gift of Mrs. Lillian Henkel Haass.
- Lapwing*, (water color) French, XVIII Century. Gift of Dr. and Mrs. George Kamperman.
- Portrait of Hubert Simon*, (pastel), by Hofmann de Waldeburg, German (Leipzig), XIX Century. Gift of Miss Lillie Simon.
- Portrait of Marie Sophia Rosenkranz Simon, Wife of Hubert Simon*, (pastel), by Hoffmann de Waldenburg, German (Leipzig), XIX Century. Gift of Miss Lillie Simon.
- The Piazza of St. Mark, Venice*, by Michele Marieschi, Italian, 1696-1743. Gift of Mr. and Mrs. E. Raymond Field.
- Rebecca at the Well*, by Corrado Giaquinto, Italian (Naples), 1693-1765. Gift of Erick W. Bergmann.
- The Betrayal of Christ*, by Stefano di Giovanni, called Sassetta, Italian (Siena), 1392-1450. Founders Society, General Membership Funds.
- Holy Family with St. Francis*, by Annibale Carracci, Italian, 1560-1609. Gift of Mr. and Mrs. E. Raymond Field.
- Landscape*, screen, Japanese, XIX Century. Bequest of Elizabeth S. Cooley.

## SCULPTURE

- Space Modulator*, by Laslo Moholy-Nagy, American, 1895-1946. Gift of Hawkins Ferry.
- Mobile*, by Alexander Calder, American, contemporary. Gift of Mrs. Arthur U. Hooper.
- Abstract Relief*, oil on plaster, by John Ferren, American, contemporary. Gift of Robert H. Tannahill.
- Eve*, gilt-bronze, by Marshall M. Fredericks, American, contemporary. Gift of Mrs. David B. Werbe.
- Head of Pavlova*, wax, by Malvina Hoffman, American, contemporary. Gift of John Thacher, Georgetown, Washington, D. C.
- Eagle*, wood, by William Schimmel, American (Pennsylvania), flourished 1860-1890. Gift of Mrs. Edsel B. Ford.
- Crucifix, wood, Canadian, after 1850. Gift of John S. Newberry, Jr.
- The Four Evangelists*, polychrome applique relief, attributed to Paul Labrosse, Canadian, XVIII Century. Gift of Robert H. Tannahill.
- Head of a Man*, limestone, Egyptian, XVIII Dynasty. Founders Society, General Membership Fund.
- Rider*, Etruscan, Second Half V Century B.C. City Appropriation.
- Cat*, walnut bas-relief, by Raymond Duchamp-Villon, French, 1876-1918. Gift of Robert H. Tannahill.
- George Washington*, gilt bronze, by Francois-Marie Suzanne, French, XVIII Century. Gift of Robert H. Tannahill.
- Floating Woman*, bronze, by Gaston Lachaise, French, 1882-1935. Gift of Robert H. Tannahill.
- Gautama Buddha*, sandstone relief, (Gupta), India, c.500. Founders Society, Sarah Bacon Hill Fund.



Pedestal, serpentine marble, Italian, XIX Century. Gift of Mrs. Earl D. Baker.  
Roman altar (pedestal), II Century. Gift of Clarence H. Woolley.  
*Dancing Nymphs & Satyrs*, terra cotta groups, by Claude Michel Clodion, French, 1738-1814. Gift of Mr. and Mrs. Edgar B. Whitcomb.  
*Zapate*, wood impost block, Spanish (Mudejar), XV Century. Gift of Mrs. Lillian Henkel Haass.

## PRINTS

*Sleeping Girl*, etching, by Albert Sterner, American, 1863-. Gift of Dr. and Mrs. George Kamperman.  
*Annie Seated*, etching, by James Abbott McNeil; Whistler, American 1834-1903. Gift of Dr. and Mrs. George Kamperman.  
*Bibi Lalouette*, etching, by James Abbott McNeil; Whistler, American, 1834-1903. Gift of Dr. and Mrs. George Kamperman.  
*Bibi Valentin*, etching, by James Abbott McNeil; Whistler, American, 1834-1903. Gift of Dr. and Mrs. George Kamperman.  
*Early Morning Battersea*, etching, by James Abbott McNeil; Whistler, American, 1834-1903. Gift of Dr. and Mrs. George Kamperman.  
*The Lime Burner*, etching, by James Abbott McNeil; Whistler, American, 1834-1903. Gift of Dr. and Mrs. George Kamperman.  
*The Music Room*, etching, by James Abbott McNeil; Whistler, American, 1834-1903. Gift of Dr. and Mrs. George Kamperman.  
*The River*, woodcut, by Emil Ganso, American, 1895-. Gift of Dr. and Mrs. George Kamperman.  
*Still Life*, woodcut, by Emil Ganso, American, 1895-. Gift of Dr. and Mrs. George Kamperman.  
*Checkers*, etching, by Gordon Grant, American, 1875-. Gift of Dr. and Mrs. George Kamperman.  
*Le Mendant*, etching, by Arthur William Heintzelman, American, 1891-. Gift of Dr. and Mrs. George Kamperman.  
*Little Head No. 3*, etching, by Arthur William Heintzelman, American, 1891-. Gift of Dr. and Mrs. George Kamperman.  
*Sur la Place du Marche*, etching, by Arthur William Heintzelman, American, 1891-. Gift of Dr. and Mrs. George Kamperman.  
*Young Woman*, lithograph, by Rockwell Kent, American, 1882-. Gift of Dr. and Mrs. George Kamperman.  
*The Net Menders*, woodcut, by Tod Lindenmuth, American, 1885-. Gift of Dr. and Mrs. George Kamperman.  
*The Growth of the Soil*, lithograph, by Margaret Lowengrund, American, 1902-. Gift of Dr. and Mrs. George Kamperman.  
*Summer Yellow Legs*, etching, by Frank W. Benson, American, 1862-. Gift of Mrs. Edsel B. Ford.  
*The Boston Massacre*, color print, by Paul Revere, American, 1735-1818. Gift of Mrs. Edsel B. Ford.  
*The Battle of New Orleans*, colored lithograph, by Nathaniel Currier, American, 1813-1888. Gift of Mrs. Edsel B. Ford.  
*George Washington, Esquire*, aquatint, by Alexander Campbell, American, 1775. Gift of Mrs. Edsel B. Ford.  
*Declaration of Independence*, line engraving in color, American, XVIII Century. Gift of Mrs. Edsel B. Ford.  
*New York and Environs*, colored lithograph, by Carl Harnisch, American, 1800-1883. Gift of Mrs. Edsel B. Ford.  
*Captain Isaac Hull (1775-1843)*, aquatint, by William Strickland, American, (Philadelphia), 1787-1854. Gift of Mrs. Edsel B. Ford.

- Fish-hawk or Osprey*, colored engraving, by John J. Audubon, American, 1785-1851. Gift of Mr. and Mrs. Edgar B. Whitcomb.
- Night Heron or Qua Bird*, colored engraving, by John J. Audubon, American, 1785-1851. Gift of Mr. and Mrs. Edgar B. Whitcomb.
- Bird of Washington or Great American Sea Eagle*, colored engraving, by John J. Audubon, American, 1785-1851. Gift of Mr. and Mrs. Edgar B. Whitcomb.
- Brown-headed Nuthatch*, colored engraving, by John J. Audubon, American, 1785-1851. Gift of Mr. and Mrs. Edgar B. Whitcomb.
- Ferruginous Thrush*, colored engraving, by John J. Audubon, American, 1785-1851. Gift of Mr. and Mrs. Edgar B. Whitcomb.
- Great-footed Hawk*, colored engraving, by John J. Audubon, American, 1785-1851. Gift of Ormond E. Hunt.
- Yellow-billed Cuckoo*, by John J. Audubon, American, 1785-1851. Gift of Ormond E. Hunt.
- Great Northern Diver or Loon*, by John J. Audubon, American, 1785-1851. Gift of Ormond E. Hunt.
- Night Hawk*, by John J. Audubon, American, 1785-1851. Gift of Ormond E. Hunt.
- Childhood from The Voyage of Life*, mezzotint, by James Smillie, American, 1807-1885. Founders Society, D. M. Ferry, Jr. Fund.
- Youth*, from *The Voyage of Life*, mezzotint, by James Smillie, American, 1807-1885. Founders Society, D. M. Ferry, Jr. Fund.
- Youth* from *The Voyage of Life*, mezzotint, by James Smillie, American, 1807-1885. Founders Society, D. M. Ferry, Jr. Fund.
- Middle Age* from *The Voyage of Life*, mezzotint, by James Smillie, American, 1807-1885. Founders Society, D. M. Ferry, Jr. Fund.
- Dutch Mother With Her Children*, etching, by Gari Melchers, American, 1860-1932. Gift of Dr. and Mrs. George Kamperman.
- The Skaters*, etching, by Gari Melchers, American, 1860-1932. Gift of Dr. and Mrs. George Kamperman.
- Contentment*, lithograph, by Peggy Bacon, American, 1895-. Gift of Dr. and Mrs. George Kamperman.
- Faithful Achates*, etching, by Peggy Bacon, American, 1895-. Gift of Dr. and Mrs. George Kamperman.
- Boatyard*, etching, by Lionel Barrymore, American, 1878-. Gift of K. T. Keller.
- Hukū, Hawaii*, etching, by John Kelly, American, contemporary. Gift of K. T. Keller.
- Chateau Frontenac, Quebec*, etching, by M. Sterner, American, contemporary. Gift of K. T. Keller.
- Rock, Weeds, and Thistles*, etching, by Alfred Russell, American, contemporary. Gift of Hal H. Smith and Yates G. Smith.
- Draught Horses, 1906*, etching, by Donald Shaw MacLaughlan, American, 1876-1938. Gift of Dr. and Mrs. George Kamperman.
- Rue des Halles*, etching, by Donald Shaw MacLaughlan, American, 1876-1938. Gift of Dr. and Mrs. George Kamperman.
- Interior of Hagia Sophia, Constantinople*, etching, by Louis C. Rosenberg, American, 1890-. Gift of Dr. and Mrs. George Kamperman.
- Piazza della Rotunda*, etching, by Louis C. Rosenberg, American, 1890-. Gift of Dr. and Mrs. George Kamperman.
- Group of 6 etchings from the *Jungle Scenes*, by Edward John Stevens, Jr., American, 1922-. Founders Society, Elliott T. Slocum Fund.
- Mime*, etching and engraving, by Minerva Citron, American, contemporary. Founders Society, Elizabeth P. Kirby Fund.
- Abstract Composition*, etching, by Adolph Gottlieb, American, contemporary. Founders Society, Elizabeth P. Kirby Fund.

- Ecstatic Dance*, engraving and etching, by Patricia Phillips, American, contemporary. Founders Society, Elizabeth P. Kirby Fund.
- The Astrologers*, engraving and soft ground, by Kurt Roesch, American, contemporary. Founders Society, Elizabeth P. Kirby Fund.
- Man at the Piano*, colored woodcut, by Louis Shanker, American, contemporary. Founders Society, Elizabeth P. Kirby Fund.
- In Memory of the Children of Europe Who Have to Die of Cold and Hunger this Christmas*, lithograph, by Oskar Kokoschka, Austrian, 1886-. Gift of Oskar Kokoschka.
- Two Peasants and Their Dog*, etching, by Jacob Ruysdael, Dutch, 1628-1682. Gift of Mrs. Edsel B. Ford.
- Asking for the Doll*, etching, by Adrian van Ostade, Dutch, 1610-1685. Gift of Dr. and Mrs. George Kamperman.
- Fisher Girl*, etching, by Josef Israels, Dutch, 1824-1911. Gift of Dr. and Mrs. George Kamperman.
- Old Man Walking*, etching, by Josef Israels, Dutch, 1824-1911. Gift of Dr. and Mrs. George Kamperman.
- The Rest on the Flight: A Night Piece*, etching, by Rembrandt van Rijn, Dutch, 1606-1669. Gift of Dr. and Mrs. George Kamperman.
- Self-Portrait with a Feathered Cap*, etching, by Rembrandt van Rijn, Dutch, 1606-1669. Gift of Dr. and Mrs. George Kamperman.
- Prince Albert at Balmoral*, mezzotint, English, XIX Century. Gift of Hector Bolitho.
- Queen Victoria*, engraving, by Frederick Bacon, English, 1803-1887. Gift of Hector Bolitho.
- Queen Victoria*, engraving, by Frederick Bacon, English, 1803-1887. Gift of Hector Bolitho.
- Ardgour*, etching, by John G. Mathieson, English, XX Century. Gift of Dr. and Mrs. George Kamperman.
- Ballachulish*, etching, by John G. Mathieson, English, XX Century. Gift of Dr. and Mrs. George Kamperman.
- Lock Leven*, etching, by John G. Mathieson, English, XX Century. Gift of Dr. and Mrs. George Kamperman.
- An Act of God*, etching, by Arthur Briscoe, English, contemporary. Gift of K. T. Keller.
- Evening on the Zuyder Zee*, etching, by Sidney M. Litten, English, contemporary. Gift of K. T. Keller.
- Venetian Steps*, etching, by Sidney M. Litten, English, contemporary.
- Sleeping Child*, lithograph, by Ethel Leontine Gabain, English, 1883-. Gift of Dr. and Mrs. George Kamperman.
- Le Bac de Bezons*, etching, by Charles Francois Daubigny, French, 1817-1878. Gift of Dr. and Mrs. George Kamperman.
- Golfe Joan*, lithograph, by Raoul Dufy, French, 1878-. Gift of Dr. and Mrs. George Kamperman.
- Cows Drinking*, etching, by Charles Emile Jacques, French, 1813-1894. Gift of Dr. and Mrs. George Kamperman.
- L'Abreuvoir aux Moutons*, etching, by Charles Emile Jacques, French, 1813-1894. Gift of Dr. and Mrs. George Kamperman.
- La Vachere*, etching, by Charles Emile Jacques, French, 1813-1894. Gift of Dr. and Mrs. George Kamperman.
- Le Troupeau de Cochons*, etching, by Charles Emile Jacques, French, 1813-1894. Gift of Dr. and Mrs. George Kamperman.
- Le Troupeau de Porcs*, etching, by Charles Emile Jacques, French, 1813-1894. Gift of Dr. and Mrs. George Kamperman.

- Le Troupeau de Vaches*, etching, by Charles Emile Jacques, French, 1813-1894. Gift of Dr. and Mrs. George Kamperman.
- Portrait of a Boy*, etching, by Charles Emile Jacques, French, 1813-1894. Gift of Dr. and Mrs. George Kamperman.
- Woman Churning*, etching, by Charles Emile Jacques, French, 1813-1894. Gift of Dr. and Mrs. George Kamperman.
- The Three Trees*, etching, by Alphonse Legros, French, 1837-1911. Gift of Dr. and Mrs. George Kamperman.
- Au Chat Noir*, etching, by Auguste Lepere, French, 1849-1918. Gift of Dr. and Mrs. George Kamperman.
- Le Dimanche au Cabaret*, etching, by Auguste Lepere, French, 1849-1918. Gift of Dr. and Mrs. George Kamperman.
- Peasants in the Field*, etching, by Jean Francois Millet, French, 1814-1875. Gift of Dr. and Mrs. George Kamperman.
- Peasant with a Wheelbarrow*, etching, by Jean Francois Millet, French, 1814-1875. Gift of Dr. and Mrs. George Kamperman.
- The Potato Gatherers*, lithograph, by Jean Francois Millet, French, 1814-1875. Gift of Dr. and Mrs. George Kamperman.
- Odalisque*, etching, by Henri Matisse, French, 1869-. Gift of Robert H. Tannahill.
- Seated Nude*, lithograph, by Aristide Maillol, French, 1861-. Gift of Robert H. Tannahill.
- Les Pauvres*, 1929, lithograph, by George Rouault, French, 1871-. Gift of Robert H. Tannahill.
- Io*, colored lithograph, by Georges Braque, French, 1881-. Gift of John S. Newberry, Jr.



THE POTATO GATHERERS  
LITHOGRAPH BY JEAN FRANCOIS MILLET, FRENCH, 1814-1875  
Gift of Dr. and Mrs. George Kamperman, 1946

- Soleil Couchant*, etching, by Jean Francois Raffaelli, French, 1850-1924. Gift of Dr. and Mrs. George Kamperman.
- Etter*, etching, by Dunoyer de Segonzac, French, 1884-. Gift of Dr. and Mrs. George Kamperman.
- Abstract Composition*, etching, by Georges Braque, French, 1881-. Gift of Mrs. Allan Shelden.
- Tingle Tangel II*, colored lithograph, by Emil Nolde, German, 1867-. Gift of Curt Valentin.
- The Labors of Hercules*, set of 12 engravings, by Hans Sebald Beham, German, 1500-1550. Gift of Dr. and Mrs. George Kamperman.
- The Fischier Family*, etching, by Max Pechstein, German, 1881-. Gift of Dr. and Mrs. George Kamperman.
- Head of a Woman*, etching, by Wilhelm Lehmbruck, German, 1881-1919. Gift of Robert H. Tannahill.
- Young Colt*, etching, by Renee Sintenis, German, 1888-. Gift of Curt Valentin.
- Seashore Scene*, woodblock, by Ando Hiroshige, Japanese, 1797-1858. Gift of Dr. and Mrs. George Kamperman.
- Monkeys*, lithograph, by Edward Munch, Norwegian, 1863-. Gift of Robert H. Tannahill.
- Sculptor Modeling*, etching, by Pablo Picasso, Spanish, 1881-. Gift of Robert H. Tannahill.
- Still-life with Lobster*, colored engraving, by Pablo Picasso, Spanish, 1881-. Founders Society, Elliott T. Slocum Fund.
- The Combat*, etching, by Pablo Picasso, Spanish, 1881-. Founders Society, Hal H. Smith Fund.
- Clown*, etching, by Pablo Picasso, Spanish, 1881-. Gift of Dr. and Mrs. George Kamperman.
- Boys on Horseback*, etching, by Pablo Picasso, Spanish, 1881-. Gift of Dr. and Mrs. George Kamperman.
- Salome*, etching, by Pablo Picasso, Spanish, 1881-. Gift of Dr. and Mrs. George Kamperman.
- The Family*, etching, by Pablo Picasso, Spanish, 1881-. Gift of Dr. and Mrs. George Kamperman.
- Two Young Acrobats*, etching, by Pablo Picasso, Spanish, 1881-. Gift of Dr. and Mrs. George Kamperman.
- Portrait of Prince Paul Troubetskoy*, etching, by Anders Zorn, Swedish, 1860-1920. Gift of Dr. and Mrs. George Kamperman.

## DRAWINGS

- Landscape with Peasants*, by Esaias Van de Velde, Dutch, 1590-1630. Gift of Dr. and Mrs. George Kamperman.
- Near Trasimeno*, by Sir Muirhead Bone, English, 1876-. Gift of Dr. and Mrs. George Kamperman.
- Norwich*, by Sir Muirhead Bone, English, 1876-. Gift of Dr. and Mrs. George Kamperman.
- Tangle of Lives*, by George Grosz, German, 1893-. Gift of Dr. and Mrs. Hans Schaeffer.
- A Landscape with Figures*, by Giovanni Francesco Barbieri Guercino, Italian, 1591-1666. Gift of John S. Newberry, Jr.
- Design for Stage Setting*, by Francesco Galli Bibiena, Italian, 1659-1739. Gift of John S. Newberry, Jr.
- Italian Soldiers and a Blind Beggar*, by Stefano della Bella, 1610-1664. Gift of John S. Newberry, Jr.

*Samson and Delilah*, by Luca Cambiaso, Italian, 1527-1585. Gift of John S. Newberry, Jr.

*Illustration for Bluebeard*, pen and ink wash drawing, by William Makepeace Thackeray, English, 1811-1863. Gift of Mrs. Edsel B. Ford.

## ARCHITECTURAL DRAWINGS

Group of architectural drawings from Albert Kahn Associates.

Group of architectural drawings by Wilson Eyre, Philadelphia and New York. Gift of Miss Louisa Eyre.

## BOOK ARTS

*Deche de Tito Livio vulgare hystoriate*, printed in Venice by Bartholameo de Zani de Zani de Portesio, 1511, contemporary leather binding. Anonymous Gift.

## TEXTILES

Louis XV savonnerie rug, French, XVIII Century. Gift of the Josephine and Ernest Kanzler Fund.

Medallion rug, Chinese, early XIX Century. Gift of Misses Grace and Christine Symington, in memory of their father, Campbell Symington.

Tapestry, verdure, Flemish, early XVI Century. Gift of Oscar Webber.

Tapestry, fragmentary, Flemish, early XVI Century. Gift of H. Arnhold.

Tapestry, fragment of border, Flemish, XVI Century. Gift of K. T. Keller.

Tapestry, fragment of border, French, Gobelin, late XVII Century. Gift of K. T. Keller.

Tapestry, atependium, Italian, Florence, late XVI Century. Gift of K. T. Keller.

Navajo blanket, American Indian, XIX Century. Gift of K. T. Keller.

Silk lampas, Chinese, XVIII Century. Gift of K. T. Keller.

*Flowers and Butterflies*, silk embroidery, Chinese, XIX Century. Gift of Dr. and Mrs. Thomas S. Cooley.

*Orante*, Looped tapestry on linen, Coptic, IV-V Century. Founders Society, Octavia W. Bates Fund.

*Head of a Man*, tapestry, Coptic, IV Century. Gift of the Founders Society, Octavia W. Bates Fund.

*Queen Victoria*, silk ribbon, English, Coventry, XIX Century. Gift of Hector Bolitho.

*The Sacrifice of Isaac*, relief and flat embroidery on white satin, English, XVII Century. Gift of Mrs. John S. Newberry.

Baby cap, embroidered linen, English, XVIII Century. Gift of Mrs. Roy C. Manson.

*Chinoiserie*, polychrome printed cotton, French, Jouy, XVIII Century. Gift of Francis W. Robinson.

Silk and linen compound cloth, German, Regensburg, XIII Century. Founders Society, Octavia W. Bates Fund.

*The Crucifixion*, embroidered orphrey on chasuble. Velvet, Italian, Venice, early XV Century; Embroidery, German, Bohemia, early XV Century. Gift of Mr. and Mrs. Leslie H. Green.

Twelve Samplers, South German and Austrian, XVII to XIX Centuries. Gift of Mrs. John S. Newberry.

Shawl, gold brocaded silk, Indian, Mughal, XVIII Century. Gift of Mrs. Roy C. Manson.

Scarf, Chinoiserie, printed silk. Indian, for foreign trade, XVIII Century. Gift of Arthur D. Maguire.

Figured silk panel, Japanese, XIX Century. Gift of Miss Emily Cooley.

- Tomb Cover, silk embroidered cotton, Moroccan, early XIX Century. Gift of Francis W. Robinson.
- Bodice and Apron, Roumanian, XIX Century. Gift of Mrs. Eva Pecican, in memory of her daughter, Ann Mary G. Pecican.
- Chenille and silver brocade, Russian, late XVIII Century. Founders Society, William C. Yawkey Fund.
- Gold brocade, Spanish, XVIII Century. Anonymous gift.
- Gold brocade, Spanish, XVIII Century. Bequest of Miss Elizabeth S. Cooley.
- Abraham Lincoln*, silk ribbon, Swiss, Basel, XIX Century. Gift of Mrs. Max Colter.
- Prayer mat, silk and metal embroidery on cotton, Turkish, XIX Century. Gift of Mrs. Carol N. Lord, in memory of her mother, Mrs. Truman S. Newberry.
- Gold brocaded polychrome velvet, Turkish, XVI Century. Gift of Robert H. Tannahill.
- Group of twelve textiles and embroideries, Chinese, Italian, Spanish and Turkish, XVII to XX Centuries. Gift of Mrs. Isadore Levin.

## CERAMICS

- Group of 18 pieces of Pewabic Pottery, by Mary Chase Stratton, American, contemporary. Gift of Mr. and Mrs. James Inglis, Mrs. Arthur McGraw, Dr. Walter E. Parker, Gustavus D. Pope, in memory of Mary Soper Pope, Willard Pope, and Mrs. Richard Webber.
- Bowl, porcelain, by John A. Foster, American (Detroit), contemporary. Gift of E. P. Richardson.
- Scotch Terrier*, pottery figure with black glass, by Walt Speck, American (Detroit), contemporary. Gift of E. P. Richardson.
- Group of 26 glazed earthenware and porcelain ceramics, Chinese and English, XVIII and XIX Centuries. Bequest of Mrs. William B. Weston.
- Group of ceramics, white earthenware, stoneware and porcelain, Chinese and English, XVIII Century. Gift of Mrs. Edsel B. Ford.
- Figurine *Farm Boy at Market*, tin-enameled faience, French (Niderviller), XVIII Century. City Appropriation.
- Figurine *Farm Girl at Market*, tin-enameled faience, French (Niderviller), XVIII Century. City Appropriation.
- Inkwell, porcelain, German, XIX Century. Gift of Miss Emma Butzel.
- Pompeian Sand Bowl, by Gertrud and Otto Natzler, German, contemporary. Gift of Mrs. Harry L. Winston.

## FURNITURE

- Desk on frame, maple, American, Early XVIII Century, (Queen Anne style). Gift of Mrs. Edsel B. Ford.
- Trestle-board Table, pine, American, XVII Century. Gift of Mrs. Edsel B. Ford.
- Butterfly Table, maple, American, XVIII Century. Gift of Mrs. Edsel B. Ford.
- Pair Armchairs, American, XVIII Century. Gift of Mrs. Edsel B. Ford.
- Comb-back Windsor armchair, American, XVIII Century. Gift of Mrs. Edsel B. Ford.
- Wing armchair, carved walnut, American, XVIII Century. Gift of Mrs. Edsel B. Ford.
- Pair Sidechairs, carved walnut, American, XVIII Century. Gift of Mrs. Edsel B. Ford.
- Bedside Table, pine, American, XVIII Century. Gift of Mrs. Edsel B. Ford.
- Corner Cupboard, pine, American, XVIII Century. Gift of Mrs. Edsel B. Ford.

- Table, Canadian, Province of Quebec, XVIII Century. Gift of Mrs. Edsel B. Ford.
- Sideboard, American (Sheraton), Annapolis or Albany, XVIII Century. Gift of Miss Grace Tower.
- Buffet, town style, Canadian, XVIII Century. Gift of Robert H. Tannahill.
- Knife Boxes, English. Gift of Miss Grace Tower.
- Mirror, English (Adam style), about 1770. Gift of Mrs. Edsel B. Ford.
- Cupboard, oak, French (Brittany), XIX Century. Gift of Mrs. Albert Kahn.
- Chandelier, gilt-bronze frame, French, XVIII Century. Gift of the Josephine and Ernest Kanzler Fund.
- Chest, oak, French, XVI Century. Gift of Oscar Webber.
- Two Mirrors, carved wood frame, Italian, XVI Century. Gift of Mrs. Ralph H. Booth.
- Refectory Table, carved walnut, Italian, late XVI Century. Founders Society, General Membership Fund.
- Bench, carved walnut, Italian, XVII Century. Founders Society, General Membership Fund.
- Credenza, carved walnut, Italian, XVI Century. Founders Society, General Membership Fund.
- Cabinet, certosina, walnut, Italian (Venetian), XVI Century. Gift of Mrs. Russell A. Alger.
- Credenza, Italian, Tuscan, XVI-XVII Century. Gift of Mrs. Walter O. Briggs.
- Credenza, carved walnut, Italian, XVI or XVII Century. Gift of Mrs. Ellen Shipman.



TABLE FROM THE PROVINCE OF QUEBEC, CANADA, XVIII CENTURY  
*Gift of Mrs. Edsel B. Ford, 1946*



## GLASS

- Pair of Candlesticks, clear Sandwich, American, 1835-1860. Gift of Robert H. Tannahill.
- Bottle, sapphire blue, Midwestern American. Gift of Robert H. Tannahill.
- Pitcher, clear Sandwich, American, XIX Century. Gift of Mrs. Edsel B. Ford.
- Flip Glass, clear white, American, c.1820-40. Gift of Mrs. Edsel B. Ford.
- Sugar Bowl and Cover, American (Ohio), XIX Century. Gift of Mrs. Edsel B. Ford.
- Heads of Eight Women*, stained, Flemish, early XVI Century. Gift of Mrs. Lillian Henkel Haass.
- Soldiers at the Tomb of Christ*, stained, Flemish, early XVI Century. Gift of Mrs. Lillian Henkel Haass.

## JEWELRY

- Ear plugs, stone and shell mosaic on wood, Peruvian, late Chimu XI-XV Century. Founders Society, Laura H. Murphy Fund.

## METALWORK

- Mug, silver, by John Coney, American (Boston), 1655-1722. Gift of Robert H. Tannahill.
- Gold Mask, Central American (Costa Rica), before 1500. Founders Society, Laura H. Murphy Fund.
- Pitcher, pewter, Boardman and Hart, American (New York City), XIX Century. Gift of Mrs. Edsel B. Ford.
- Dish, pewter, by Samuel Danforth, American (Hartford, Conn.), 1774-1816. Gift of Mrs. Edsel B. Ford.
- Tankard, pewter, by William Bradford, Jr., American, 1688-1759. Gift of Mrs. Edsel B. Ford.
- Whale-oil Lamp, pewter, American, about 1825-50. Gift of Mrs. Edsel B. Ford.
- Porringer, pewter, American, XVIII Century. Gift of Mrs. Edsel B. Ford.
- Porringer, pewter, American, late XVIII Century. Gift of Mrs. Edsel B. Ford.
- Porringer, silver, by Charles LeRoux, American (New York), 1689-1745. Gift of Robert H. Tannahill.
- Fluted dish, silver, by Samuel Vernon, American (Newport, R. I.), 1683-1737. Gift of Robert H. Tannahill.
- Porringer, silver, by Roland Paradis, Canadian. Gift of Robert H. Tannahill.
- Porphyry bowl, copper-gilt mounting, French (Rheims), early XIV Century. Founders Society, William H. Murphy Fund.
- Pitcher, pewter, German, XVIII Century. Gift of Mrs. Edsel B. Ford.
- Beaker, covered and footed, silver, German (Augsburg), late XVI Century. Gift of Mrs. Ralph H. Booth.
- Plaque, *Pieta of Chioggia*, bronze, South German, c.1600. Gift of Mrs. Standish Backus.

## PHOTOGRAPHS

- Portrait of Ione Rhodes of Troy, New York*, Daguerreotype, American, 1860. Gift of Mrs. Charles Julius Simon.

# DETROIT MUSEUM OF ART FOUNDERS SOCIETY

## NEW FELLOWS

Mrs. Allan Shelden

## NEW GOVERNING LIFE MEMBERS

Erick W. Bergmann  
Warren S. Booth  
Henry T. Ewald

W. Hawkins Ferry  
Mr. and Mrs. Leslie H. Green  
Mrs. Louis Mendelssohn

Miss Grace Tower  
Robert R. Williams

## NEW ANNUAL AND SUSTAINING MEMBERS

Mr. and Mrs. A. C. Barley	Dr. and Mrs. George F. Fineman
Mr. and Mrs. Sidney C. Barnes	Mr. and Mrs. Arthur A. Finnell
Mr. and Mrs. Tom H. Bartel	Mr. and Mrs. George Fischer
Mr. and Mrs. Harold G. Barthel	Mr. and Mrs. Eugene J. Fisher
Mr. and Mrs. Lysle T. Basinger	Mr. and Mrs. Ferris H. Fitch
Mr. and Mrs. Glenn A. Bates	Mr. and Mrs. Frank FitzGerald
Mr. and Mrs. Stephen Beale	Cyril J. Fleming
Mrs. G. H. Beall	Mr. and Mrs. John P. Fleming
Mr. and Mrs. Fred H. Blickwede	Mr. and Mrs. Genaro A. Florez
Mr. and Mrs. L. C. Blodgett	Mr. and Mrs. Richard A. Fontaine
Mr. and Mrs. William H. Blome	Mrs. F. C. Ford
Louis C. Blount	Mr. and Mrs. John K. Ford
Mr. and Mrs. A. L. Boegehold	Dr. Walter C. Ford
Mr. and Mrs. C. I. Boekle	Mr. and Mrs. Ted Fordon
Mr. and Mrs. Percy M. Bonathan	Dr. and Mrs. S. D. Forman
Mr. and Mrs. Thomas B. Bond	Mr. and Mrs. C. L. Fossati
Mrs. C. M. Booth	Mr. and Mrs. Foster L. Fralick
Mr. and Mrs. Walter H. Borland	Mrs. Sam Frame
Mr. and Mrs. Thomas Bosquett, Jr.	Mr. and Mrs. Irving Franzel
Mr. and Mrs. Christian A. Brinke	Mrs. Michael W. Freeman
Mr. and Mrs. Milton G. Brinkman	Mr. and Mrs. G. H. Friedt
Mr. and Mrs. Claude R. Brooks	Mr. and Mrs. Clyde L. Fulton
Mr. and Mrs. R. P. Brooks	Mr. and Mrs. L. C. Gardiner
Dr. and Mrs. A. O. Brown	Garfield Intermediate School
Mr. and Mrs. Carl O. Bross	Dr. and Mrs. Natl. Gates
Dr. and Mrs. Henry S. Brown	Dr. and Mrs. V. E. Gauthier
Mr. and Mrs. Warren O. Brown	Mr. and Mrs. William J. Gayer
Mr. and Mrs. W. G. Buchinger, Jr.	Mrs. E. F. Gebhardt, Jr.
Dr. and Mrs. Charles M. Burgess	Dr. and Mrs. Earl A. Gelhaar
Mrs. Jay M. Burgess	Dr. and Mrs. J. Conrad Gemery
Dr. and Mrs. Henry L. Burr	Mr. and Mrs. Ralph R. Genter
Mr. and Mrs. S. J. Bustany	Mrs. Richard H. Giddey
Mr. and Mrs. R. A. Campbell	Mrs. George H. Gift
Walter S. Campbell	Dr. and Mrs. James C. Gillian
Dr. and Mrs. Meyer O. Cantor	Mr. and Mrs. Alexander H. Girard
Mr. and Mrs. Hoyt W. Capps	Dr. and Mrs. G. K. Glasgow
Mr. and Mrs. Fieldon M. Carden	Mr. and Mrs. Henry Giloman
George A. Cavanaugh	Mr. and Mrs. F. I. Goodrich
Mrs. W. H. Caverly	Mr. and Mrs. Paul Gorton
Mr. and Mrs. T. S. Cawthorne	Mr. and Mrs. Edward T. Goodrich
Mrs. Elmer M. Clark	Mr. and Mrs. Samuel J. Greenberg
Joseph M. deGrimme	Dr. and Mrs. John B. Greene
Mr. and Mrs. Paul A. Devereux	Mrs. George W. Greig
Dr. and Mrs. John M. Dorsey	Dr. and Mrs. Jose Guerrero
Mr. and Mrs. Russell A. Dossin	Mr. and Mrs. W. J. Guinan
Mr. and Mrs. E. H. Doty	Mr. and Mrs. Dan M. Guy
Mr. and Mrs. William J. Dowd	Mr. and Mrs. Harold J. Hall
Dr. and Mrs. Edward Dowdie	Mr. and Mrs. Harold W. Hanlon
Mrs. Thomas J. Dowling	Mrs. Clyde M. Harrington
Dr. and Mrs. Paul W. DuBois	Miss Jean Harrington
Mr. and Mrs. R. E. Dudley	Mrs. E. E. Harris
Dr. and Mrs. Robert H. Durham	Mr. and Mrs. Fred K. Hawk
Dr. and Mrs. T. T. Dysarz	Mr. and Mrs. Claude C. Hayward
Mr. and Mrs. Emmett E. Eagan	Mr. and Mrs. Isaac A. Hedges
Mr. and Mrs. F. E. Eagen	Mr. and Mrs. John S. Heil
Mrs. Charles William Edling	Mr. and Mrs. Samuel R. Henry
Mr. and Mrs. E. G. Edwards, Jr.	Mr. and Mrs. Laurence J. Hetzelt
Mr. and Mrs. Loyal A. Eldridge	Dr. and Mrs. Lee Hileman
Mr. and Mrs. M. C. Emery	Dr. and Mrs. Harold B. Hinchman
Mr. and Mrs. Thomas A. Emmet	Mr. and Mrs. J. Luke Hoffman
Mr. and Mrs. Harold H. Emmons, Jr.	Mr. and Mrs. Joseph M. Holtman
Mr. and Mrs. Stone R. Enberg	Mr. and Mrs. William H. Houghton
Dr. and Mrs. Joseph Eschbach	Mr. and Mrs. Howard D. House
Mr. and Mrs. Morton H. Espar	Mr. and Mrs. Albert C. Howe
Mr. and Mrs. Anthony A. Esperti	Dr. and Mrs. Theo. H. Hunt
Mr. and Mrs. Edwin M. Everham	Mr. and Mrs. Carl O. Hurlbut
Mr. and Mrs. Edward H. Fenlon	Mrs. Peter J. Iodice
Dr. and Mrs. Stanley Fenton	Mrs. C. M. Ireland
Mr. and Mrs. Nathan N. Fierberg	Mr. and Mrs. W. Irvine
Mr. and Mrs. Stanley L. Fildew	Mr. and Mrs. Arthur T. Iverson
Dr. and Mrs. Edward Fine	Mr. and Mrs. Edward W. Jackson

Mr. and Mrs. Alton F. Jarchow  
Mr. and Mrs. Henry Jassy  
Mr. and Mrs. George Jeakle  
Mr. and Mrs. Carl Johnson  
Mr. and Mrs. David W. Johnson  
Mrs. Orlen J. Johnson  
Mr. and Mrs. R. F. Johnson  
Dr. and Mrs. Ralph A. Johnson  
Dr. and Mrs. V. Johnson  
Mr. and Mrs. Frederick G. Jones  
Mr. and Mrs. Thomas I. Jones  
Louis Kamper  
H. G. Little  
Milby W. Lloyd  
Mr. and Mrs. William V. Louke  
Dr. and Mrs. M. H. Lownsbury  
Albert B. Lowrie  
Mr. and Mrs. Charles D. Lynch

Mr. and Mrs. Ray T. Lyons  
Dr. and Mrs. Howard W. MacFarlane  
Dr. and Mrs. Walter H. Mack  
Mrs. Fred Moore  
Mr. and Mrs. J. Ray Moore  
Frank Munger  
Mrs. Rober A. Pulfer  
Albert Ressler  
Miss Agnes Savage  
Miss Gretchen Anne Schoenfeld  
Mr. Vene Smeltzer  
Edward A. Sumner  
Mrs. Orla B. Taylor  
Walter F. Terry  
Mrs. S. Wells Utley  
Mr. and Mrs. Alexander N. Warrack  
H. G. Weaver  
Mrs. Harold H. Weimeister

Memberships Listed Above Added Since Last Annual Report  
(Volume XXV Number 2 1946)



*ADULT EDUCATION. Among the adult groups who arranged for special talks in the galleries was a group of war brides from various European countries.*



*MUSEUM CLASSES FOR CHILDREN. Since the creative activities in all Museum classes for children and adults as well are directed toward a better understanding of the collections, a part of each class period is spent in the galleries.*